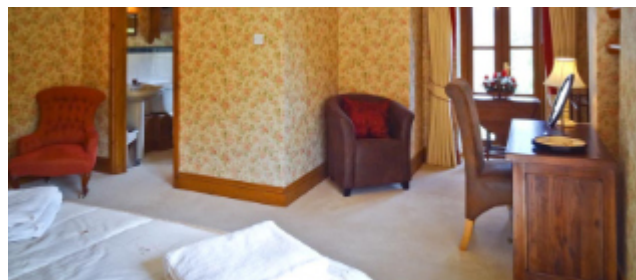


# Monkton Wyld Farmhouse, Nr Charmouth, West Dorset



Call 01297 631 131 or email [Holidays@MonktonWyld.co.uk](mailto:Holidays@MonktonWyld.co.uk)



## Weekly Prices for 2024 / 2025 Season (Arrival Saturday, Departure Saturday)

6 <sup>th</sup> Jan to 12 <sup>th</sup> Jan	£813.00
13 <sup>th</sup> Jan to 19 <sup>th</sup> Jan	£813.00
20 <sup>th</sup> Jan to 26 <sup>th</sup> Jan	£813.00
27 <sup>th</sup> Jan to 2 <sup>nd</sup> Feb	£813.00
3 <sup>rd</sup> Feb to 9 <sup>th</sup> Feb	£835.00
10 <sup>th</sup> Feb to 16 <sup>th</sup> Feb	£928.00
17 <sup>th</sup> Feb to 23 <sup>rd</sup> Feb	£889.00
24 <sup>th</sup> Feb to 1 <sup>st</sup> Mar	£849.00
2 <sup>nd</sup> Mar to 8 <sup>th</sup> Mar	£849.00
9 <sup>th</sup> Mar to 15 <sup>th</sup> Mar	£856.00
16 <sup>th</sup> Mar to 22 <sup>nd</sup> Mar	£856.00
23 <sup>rd</sup> Mar to 29 <sup>th</sup> Mar	£1,207.00
30 <sup>th</sup> Mar to 5 <sup>th</sup> Apr	£1,356.00
6 <sup>th</sup> Apr to 12 <sup>th</sup> Apr	£1,177.00
13 <sup>th</sup> Apr to 19 <sup>th</sup> Apr	£971.00
20 <sup>th</sup> Apr to 26 <sup>th</sup> Apr	£971.00
27 <sup>th</sup> Apr to 3 <sup>rd</sup> May	£1,131.00
4 <sup>th</sup> May to 10 <sup>th</sup> May	£1,426.00

11 <sup>th</sup> May to 17 <sup>th</sup> May	£1,131.00
18 <sup>th</sup> May to 24 <sup>th</sup> May	£1,131.00
25 <sup>th</sup> May to 31 <sup>st</sup> May	£2,490.00
1 <sup>st</sup> June to 7 <sup>th</sup> June	£1,229.00
8 <sup>th</sup> June to 14 <sup>th</sup> June	£1,229.00
15 <sup>th</sup> June to 21 <sup>st</sup> June	£1,507.00
22 <sup>nd</sup> June to 28 <sup>th</sup> June	£1,668.00
29 <sup>th</sup> June to 5 <sup>th</sup> July	£1,668.00
6 <sup>th</sup> July to 12 <sup>th</sup> July	£1,867.00
13 <sup>th</sup> July to 19 <sup>th</sup> July	£2,145.00
20 <sup>th</sup> July to 26 <sup>th</sup> July	£3,003.00
27 <sup>th</sup> July to 2 <sup>nd</sup> Aug	£3,003.00
3 <sup>rd</sup> Aug to 9 <sup>th</sup> Aug	£3,003.00
10 <sup>th</sup> Aug to 16 <sup>th</sup> Aug	£3,003.00
17 <sup>th</sup> Aug to 23 <sup>rd</sup> Aug	£3,003.00
24 <sup>th</sup> Aug to 30 <sup>th</sup> Aug	£3,166.00
31 <sup>st</sup> Aug to 6 <sup>th</sup> Sept	£1,571.00
7 <sup>th</sup> Sept to 13 <sup>th</sup> Sept	£1,420.00

14 <sup>th</sup> Sept to 20 <sup>th</sup> Sept	£1,172.00
21 <sup>st</sup> Sept to 27 <sup>th</sup> Sept	£998.00
28 <sup>th</sup> Sept to 4 <sup>th</sup> Oct	£998.00
5 <sup>th</sup> Oct to 11 <sup>th</sup> Oct	£1,028.00
12 <sup>th</sup> Oct to 18 <sup>th</sup> Oct	£1,028.00
19 <sup>th</sup> Oct to 25 <sup>th</sup> Oct	£1,766.00
26 <sup>th</sup> Oct to 1 <sup>st</sup> Nov	£1,766.00
2 <sup>nd</sup> Nov to 8 <sup>th</sup> Nov	£835.00
9 <sup>th</sup> Nov to 15 <sup>th</sup> Nov	£826.00
16 <sup>th</sup> Nov to 22 <sup>nd</sup> Nov	£826.00
23 <sup>rd</sup> Nov to 29 <sup>th</sup> Nov	£826.00
30 <sup>th</sup> Nov to 6 <sup>th</sup> Dec	£826.00
7 <sup>th</sup> Dec to 13 <sup>th</sup> Dec	£848.00
14 <sup>th</sup> Dec to 20 <sup>th</sup> Dec	£848.00
21 <sup>st</sup> Dec to 27 <sup>th</sup> Dec	£2,201.00
28 <sup>th</sup> Dec to 3 <sup>rd</sup> Jan 2024	£2,201.00
4 <sup>th</sup> Jan 2024 to 10 <sup>th</sup> Jan	£813.00

E&OE